

The WATTLE

Noticeboard



Number 13

23rd August 2013

AUSSIE FARMERS DIRECT REMINDER

Orders are due by Friday 30th August

Anyone can order a box, the offer is not restricted to school families so encourage your friends & families to get involved. Don't forget there's a free yoyo in every box :)

Spare forms are available outside the office if needed.

Current Aussie Farmers customers can sign up for the 2% contribution....every little counts!

FATHER'S DAY STALL TUESDAY 27th of August

Students can purchase a gift for Father's Day, so please send your children along with some money to spend. It is great for them to choose something and do the transaction on their own.

Save the Date: AUGUST

Mon 26th House Athletics Years 3-6
Hagenauer Reserve

No Canteen or Assembly

Tues 27th Father's Day Stall

Fri 30th Whole School Photo

SEPTEMBER

Tues 3rd District Athletics Years 4-6

Wed 4th-6th Level 3 Camp to Phillip Island

Sat 7th Cake Stall Election day

Tues 10th Guitar Concert 7pm

Thurs 12th Foundation 2014

Information Evening

Maths Party Year 2

Fri 20th **End Term 3 2.30 Dismissal**
Casual Clothes Day

ASHBURTON HIGH POLLING BOOTH CAKE STALL

WPPS has been invited to hold a cake stall at Ashwood High Polling Booth on Election Day, Saturday 7th September. This is a great opportunity to raise funds for our school, a proportion of which will be allocated to the YR5/6 air-conditioning :)

A coordinator is needed to send out reminders, organise a drop-off point for the produce and coordinate the roster for the day (inc. set-up/pack up). Members of the PFA will be available to help out on the day. Please contact Alison Dunn

(clubcoordinator@easterngymnastics.com.au) if you are able to get involved in this enjoyable way to help the school. If you are unable to coordinate the stall but are able to contribute cakes, preserves, a slice or an hour or so on the day - please make a note of the date in your diary...ELECTION DAY, Saturday 7th September!

Many thanks, Alison Dunn on behalf of the PFA

From the Uniform Shop

The Uniform Shop will be closed Monday 26th August due to Athletics. Our supplier of thick knit stockings has gone out of business so I cannot order them anymore.

What I have in stock is all I can get, so if you would like to stock up for next winter, come in or ring me on 9889 9759.

Limited stock of sizes: 3-5, 4-6, & 7-9.

**NO CANTEEN
or ASSEMBLY
this coming
Monday the
26th of
August.**

Please see attachments below.

Music Ensemble program
Mitcham Primary School Fete
Moon Festival Lunch
Whole School Photo

If you have anything you would like to go on to the Notice board please email Suskia at Kiatarna@hotmail.com by the Wednesday of Noticeboard week. We will endeavour to include it.

**Notices gone home
this week:**

Lice notices to
affected classes

Moon Festival Lunch

Graduation Notice
(Sent home 15th August)

Mandarin & Asian Studies



Term 3 is quickly moving along and so too are upcoming events relating to our Mandarin and Asian Studies program at WPPS. This term, we will be celebrating the Moon Festival also known as the Mid-Autumn Festival and the Moon Lantern Festival. We will continue to use Language Perfect both in the classroom and at home for Year 2 to Year 6 students.

Language Perfect

With regards, to Language Perfect any students from Year 2 to Year 6 who have lost or need their password reset. Please email me at peszynski.ainslie.a@edumail.vic.gov.au in order for their password to be reset. I hope you and your child/children are enjoying learning many Mandarin phrases and vocabulary together.

Moon Festival Celebration for WPPS Families

The Moon Festival is once again upon us and the school community is invited to celebrate the festival over lunch at **China Bar Signature – Asian Buffet in Burwood**. Last year, the event took place over 4 sessions in two days, with close to 300 members of the Wattle Park community sitting down and sharing a meal together.

This year the event will be held on one day **Sunday 15th September** and you will be invited to choose one of two sessions to come to. Please keep an eye on upcoming notices, newsletter and noticeboard entries to find out further information regarding the WPPS Moon Festival Lunch Celebration. The key aim of this meal is for community engagement.

<http://www.chinabarsignature.com>

Wattle Park Primary School



Moon Festival Lunch Celebration

Sunday 15th September (Whole School)

Dear Students and Parents/Guardians,

We are preparing to have a family lunch to celebrate the second year of WPPS having Mandarin and Asian Studies and to get into the spirit of the forthcoming 2013 Moon Festival (otherwise known as either The Mid-Autumn Festival, or The Moon Lantern Festival). The Moon Festival starts on the 15th day of the eighth month in the lunar calendar and is where family and friends gather to admire the full moon and think of absent loved ones.

This is an invitation to share a meal and enjoy the company of family, friends and the school community.

Our lunch will be an Asian buffet from where you can choose from a variety of foods from the Chinese Banquet, Yum Cha Corner, Cook-To-Order and the Patisserie.

(Please refer to <http://www.chinabarsignature.com/> to see what food will be on offer at the lunch buffet).

To find out more about The Moon Festival, please refer to:

<http://www.travelchinaguide.com/essential/holidays/mid-autumn.htm> for details on how The Moon Festival will be celebrated in Box Hill on Saturday 21st September.

Details of the WPPS Moon Festival Lunch Celebration are as follows:

Address - China Bar Signature – Asian Buffet, 380 Burwood Hwy, Burwood East (Melways Ref: 62 D7)

Date - Sunday 15th September

Time - Sunday - (Session 1) 11.30am-1.00pm and (Session 2) 1.30pm-3.00pm

Prices - Adults (includes older sibling in Secondary School) are \$35.00

Children aged 4 -12 (Wattle Park Primary Students) are \$24.50

Children 3 and under are \$10.00

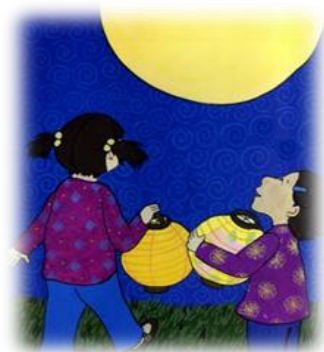
We look forward to seeing you at the Moon Festival Lunch Celebration.

Ainslie Peszynski & Gayle Cope

Please note the following 4 points before filling out the attached form:

- 1) Full payment in cash (not cheque) must be made when returning your acceptance form in a signed and sealed envelope to the office by Wednesday 11th of September.
- 2) Students must be accompanied by an adult.
- 3) The lunch is broken up into 2 sessions. Please indicate your choice of time on the acceptance form under 'Our Preferred Time is'.
- 4) Please bring small change or notes for drinks. Cards will not be accepted when ordering drinks—cash only.

**Acceptance and money is due no later than
Wednesday 11th September 2013.**





Wattle Park Primary School

Moon Festival Lunch Celebration

Yes, we would like to come to the Moon Festival Lunch Celebration at the China Bar Signature – Asian Buffet Burwood on Sunday 15th September.

Family Name _____ Child/Children's Name/s _____

Childs/Children's Class/es _____

Number of People in total _____

Number of Adults (includes older sibling in Secondary School) _____

Number of Children aged 4 to 12 (WPPS Students) _____

Number of Children aged under 3 _____

Family Email Address _____

Amount of money enclosed _____

Our Preferred Time is – (Please circle and indicate the number of people)

Sunday 15th September (Session 1) - 11.30am-1.00pm Adults ____ Children ____

Sunday 15th September (Session 2) - 1.30pm-3.00pm Adults ____ Children ____

If you have any questions, please do not hesitate to email Mrs Ainslie Peszynski (peszynski.ainslie.a@edumail.vic.gov.au)



ENROL NOW!

Instrumental Ensemble Program

**Violin, Cello, Flute, Clarinet
Trumpet & Saxophone**

8 weeks program

**1/2 hour small group lesson
each week at the school**

**Cost \$180 (incl. 1st month
rental of instrument)**

**Rental costs starting
from \$20* per month**

**Please feel free to contact us for more
information!©**

 **Music World**

☎ 9572 3391

✉ musicworld@y7mail.com

FETE SATURDAY 14TH SEPTEMBER

CRAZY HAIR

**WHITE ELEPHANT
FACE PAINTING**

CAKE STALL

RIDES
...and lots more

Show bags
SILENT AUCTION

FOOD MUSIC

Lob-a-choc

TIME
11-5pm



**Mitcham
Primary School**

thinkers | learners | leaders

COME ALONG AND HAVE SOME FUN!

294 Mitcham Rd, Mitcham

